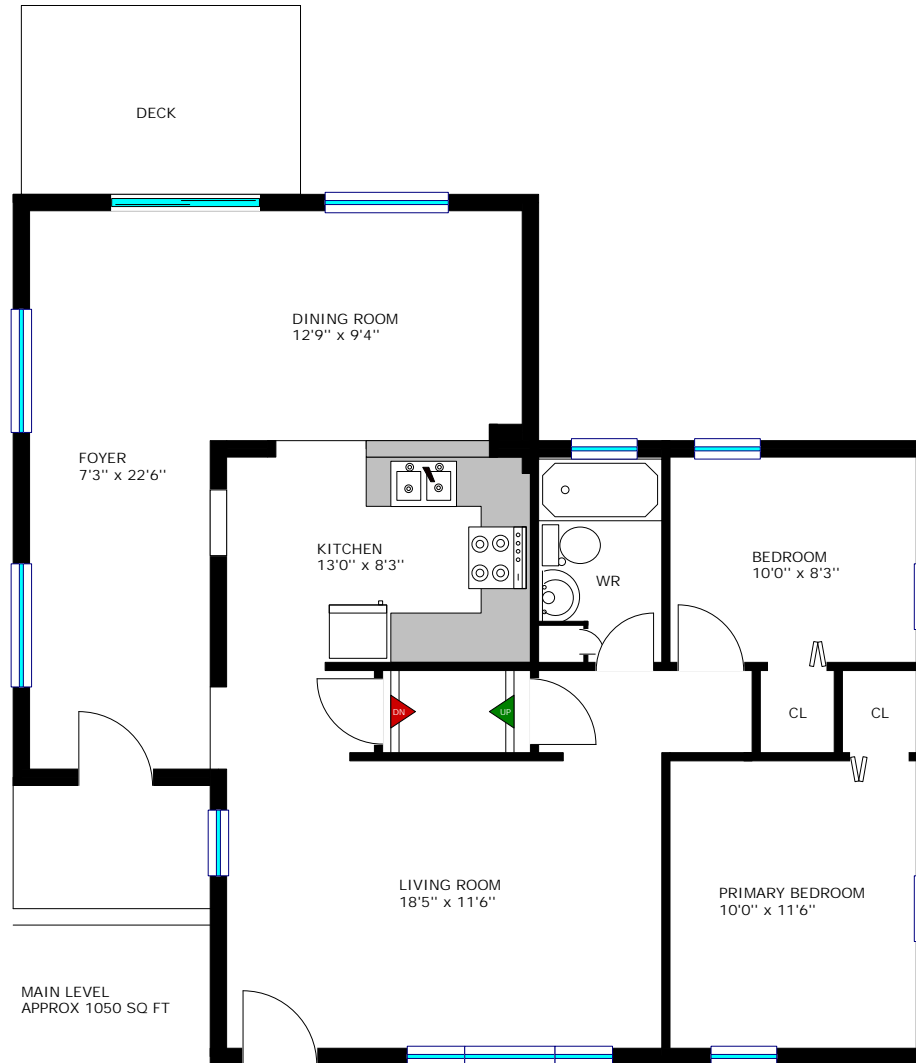


248 Brock Street, Brockville

Last Revised: 2024-08-13

Page 1 of 4

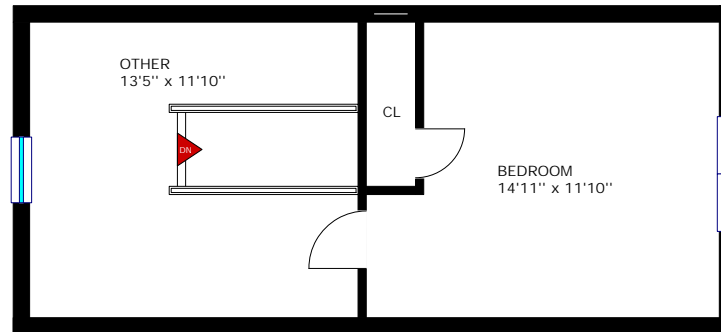
Karen Croxall
Sales Representative



www.realtyservices.ca

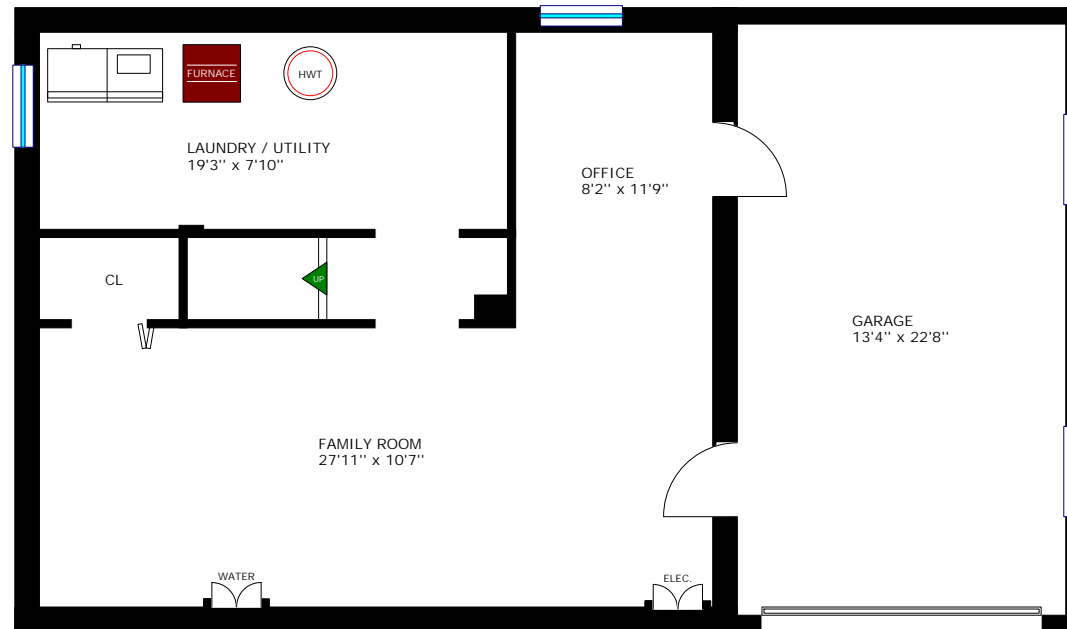
Floor plan measurements and square footage are approximate, and drawings are for illustrative purposes only. We make no guarantee or warranty as to the accuracy and completeness of the floor plan. Please be sure to conduct an independent investigation of the property to determine the suitability for your space requirements.

SECOND LEVEL
APPROX 390 SQ FT





LOWER LEVEL





Room Measurements

LEVEL	ROOM / AREA	IMPERIAL		METRIC (Metres)	
MAIN	Foyer	7'3"	x 22'6"	2.21	x 6.86
	Living Room	18'5"	x 11'6"	5.61	x 3.51
	Dining Room	12'9"	x 9'4"	3.89	x 2.84
	Kitchen	13'0"	x 8'3"	3.96	x 2.51
	Primary Bedroom	10'0"	x 11'6"	3.05	x 3.51
	Bedroom	10'0"	x 8'3"	3.05	x 2.51
	4-Pc Bath	4'11"	x 8'3"	1.50	x 2.51
SECOND	Bedroom	14'11"	x 11'10"	4.55	x 3.61
	Other	13'5"	x 11'10"	4.09	x 3.61
LOWER	Family Room	27'11"	x 10'7"	8.51	x 3.23
	Laundry & Utility	19'3"	x 7'10"	5.87	x 2.39
	Office	8'2"	x 11'9"	2.49	x 3.58
OTHER	Garage	13'4"	x 22'8"	4.06	x 6.91
	Back Deck	10'0"	x 8'0"	3.05	x 2.44

